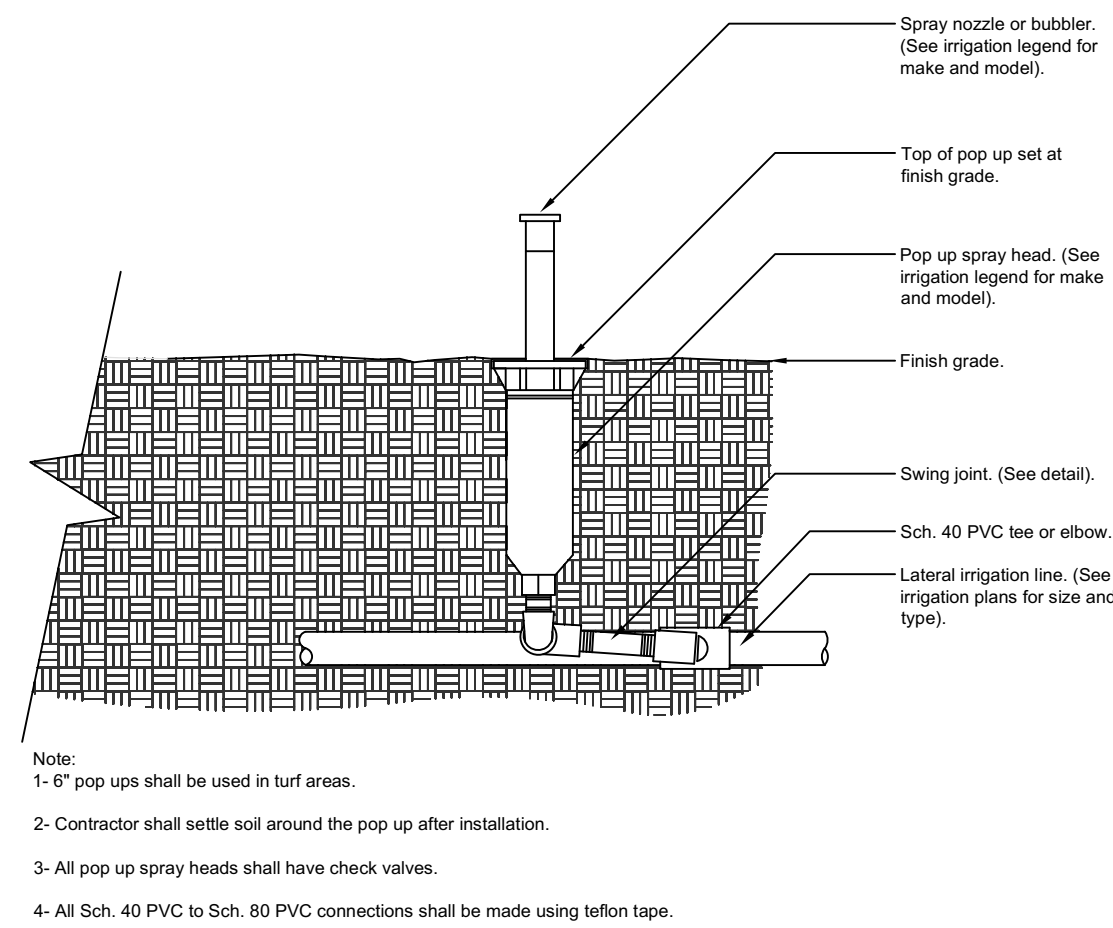
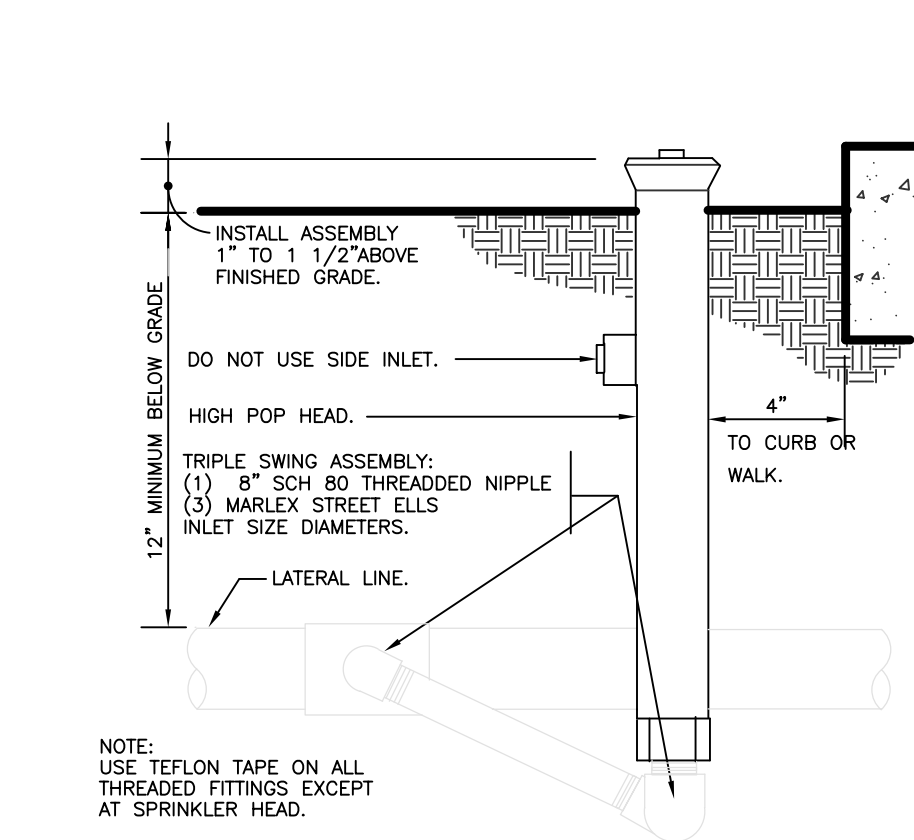


1 TURF SPRAY MARLEX ASSEMBLY  
3" = 1'-0"

32 8403.13-01

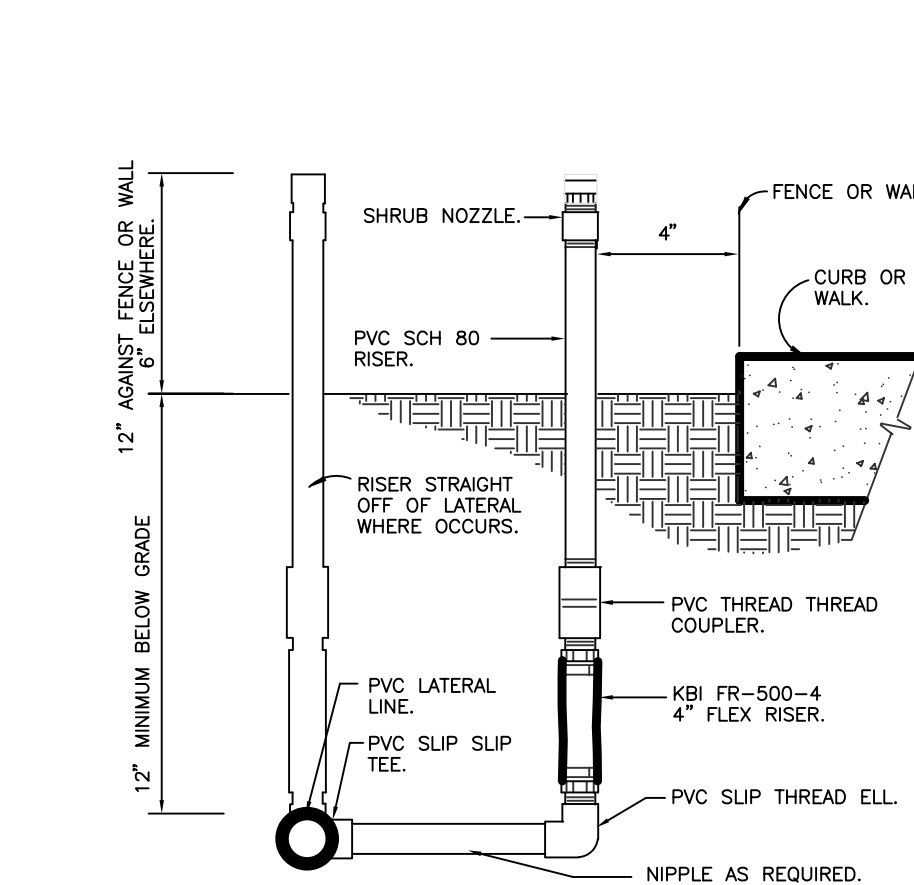


2 SHRUB SPRAY HIGHPOP MARLEX ASSEMBLY  
3" = 1'-0"

URBAN TREE FOUNDATION © 2014  
OPEN SOURCE FREE TO USE  
FX-IR-FX-HEAD-01

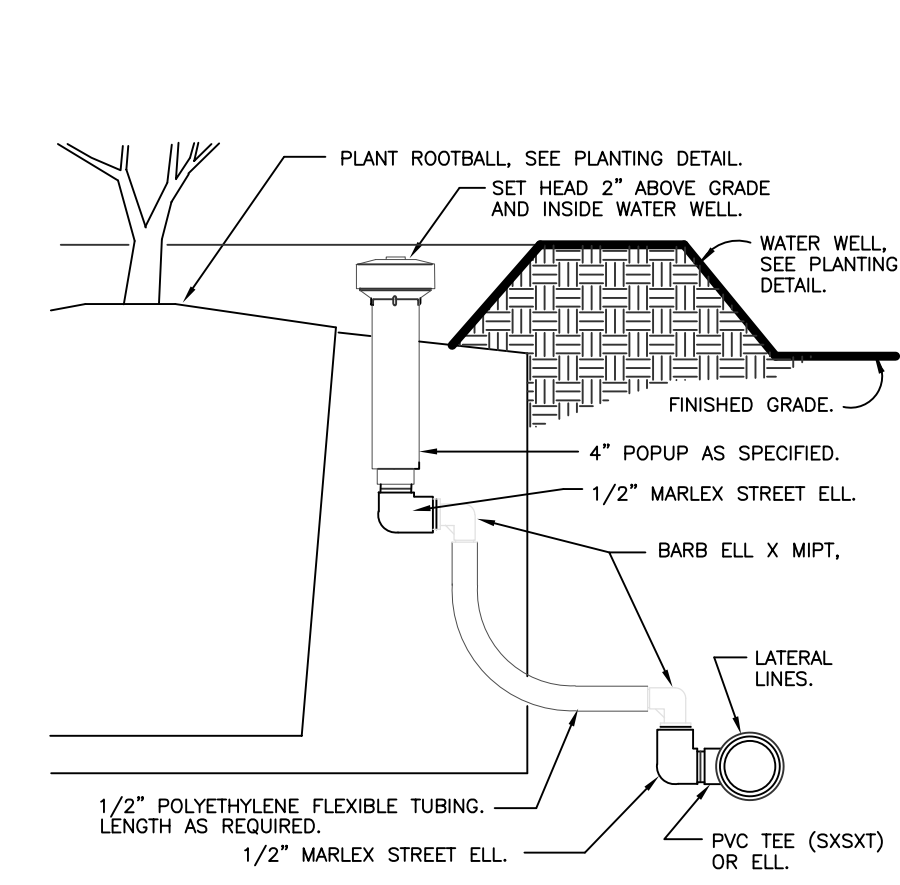
3 SHRUB SPRAY KBI FIXED RISER  
3" = 1'-0"

32 8403.29-10



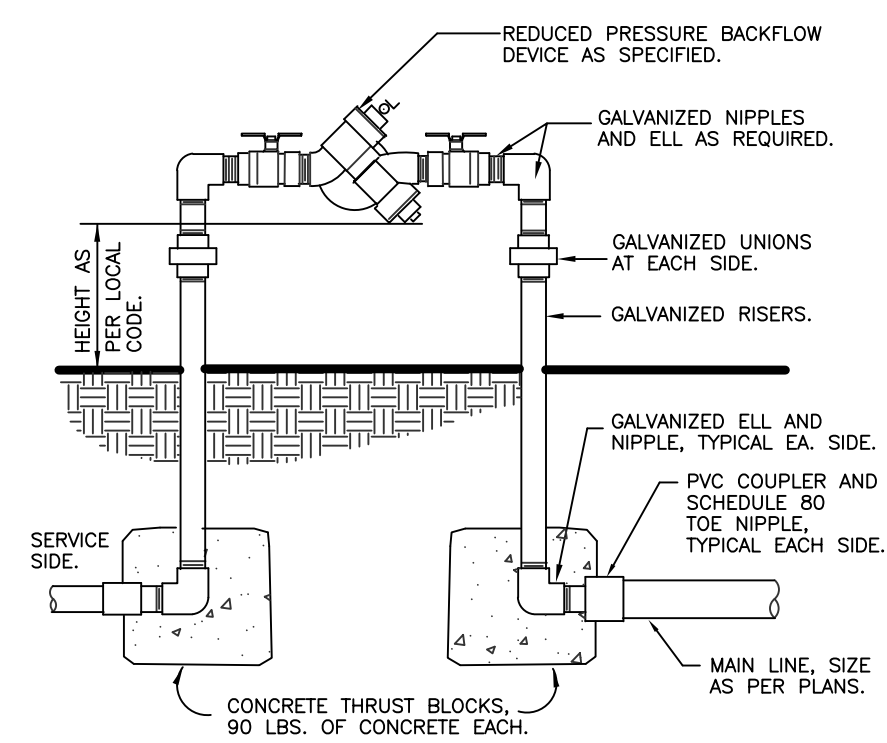
4 POPUP BUBBLER AT PLANT PIT  
3" = 1'-0"

32 8403.23-01



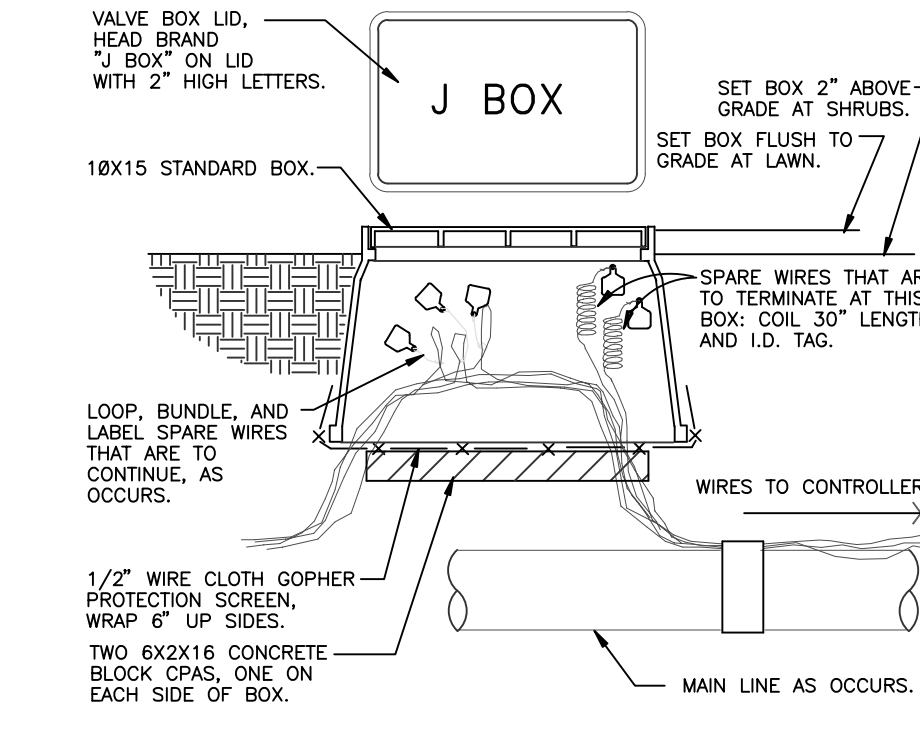
5 ELECTRIC REMOTE CONTROL VALVE  
1 1/2" = 1'-0"

32 8406.13-01



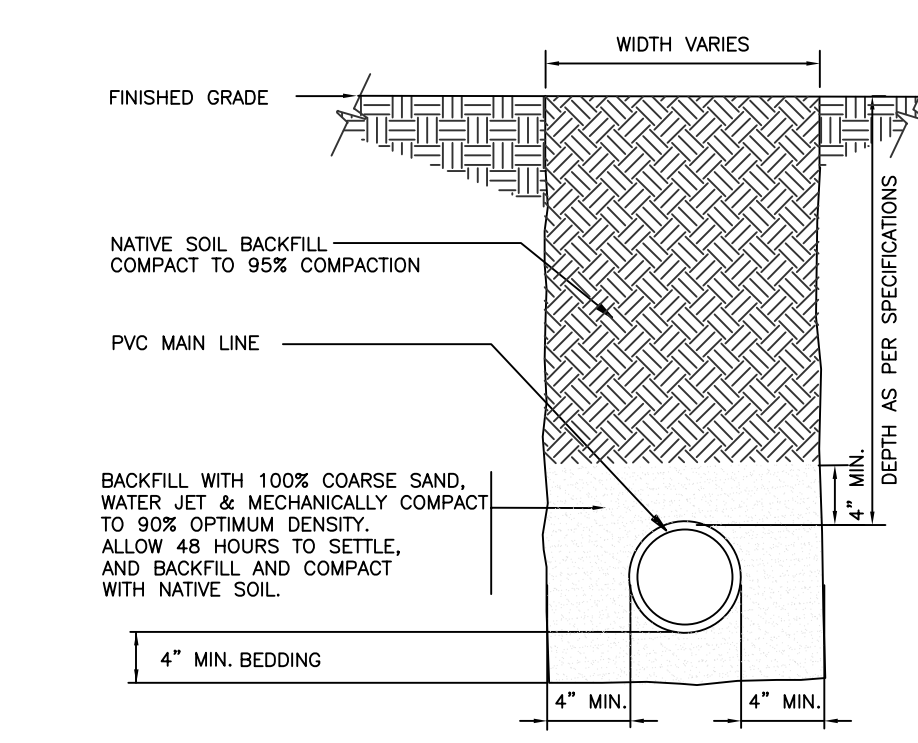
6 REDUCED PRESSURE BACKFLOW DEVICE  
1" = 1'-0"

FX-IR-FX-CONT-09



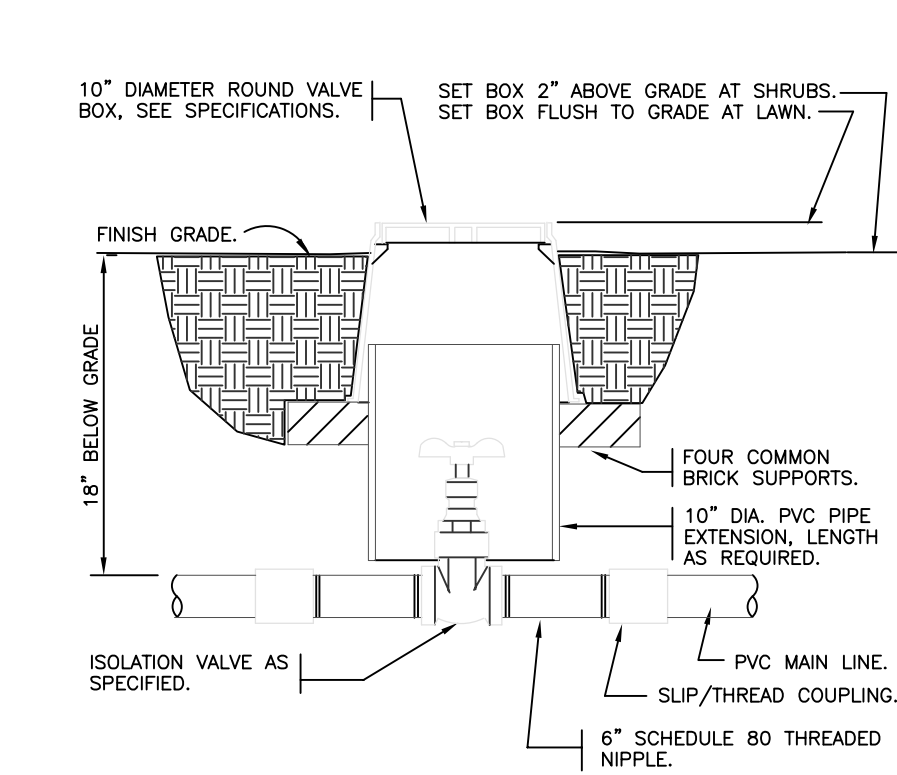
7 WIRE BUNDLE JUNCTION BOX  
1 1/2" = 1'-0"

32 8409.79-01



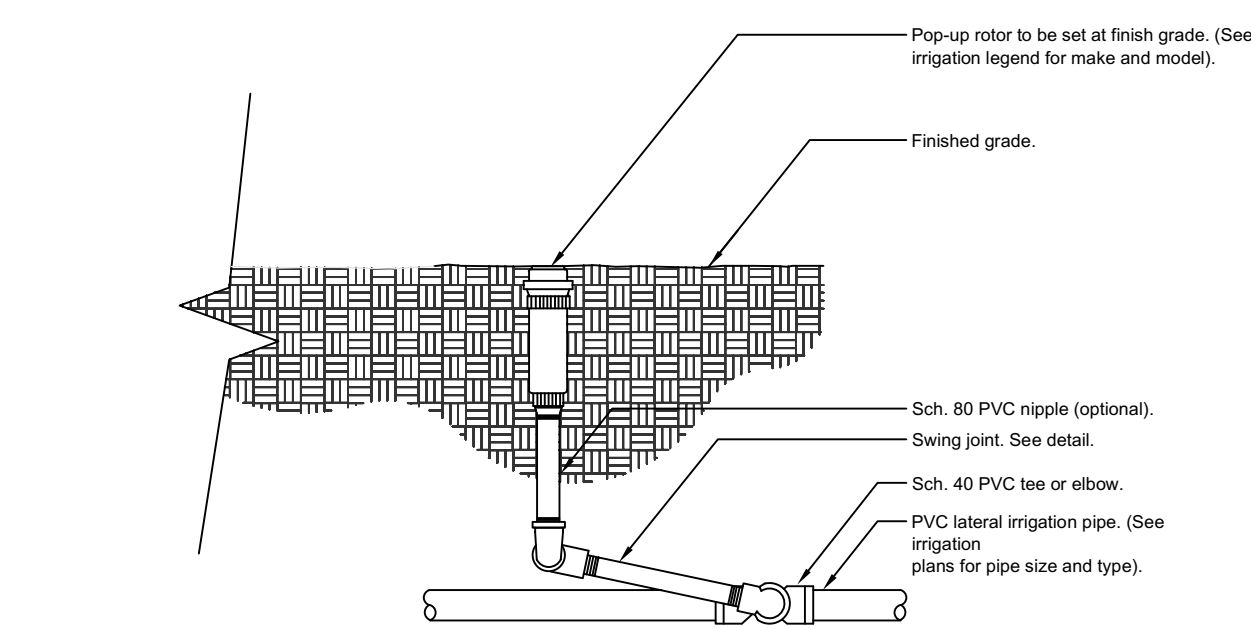
8 MAINLINE WITH SAND BEDDING  
1 1/2" = 1'-0"

FX-IR-FX-AUXEQ-13

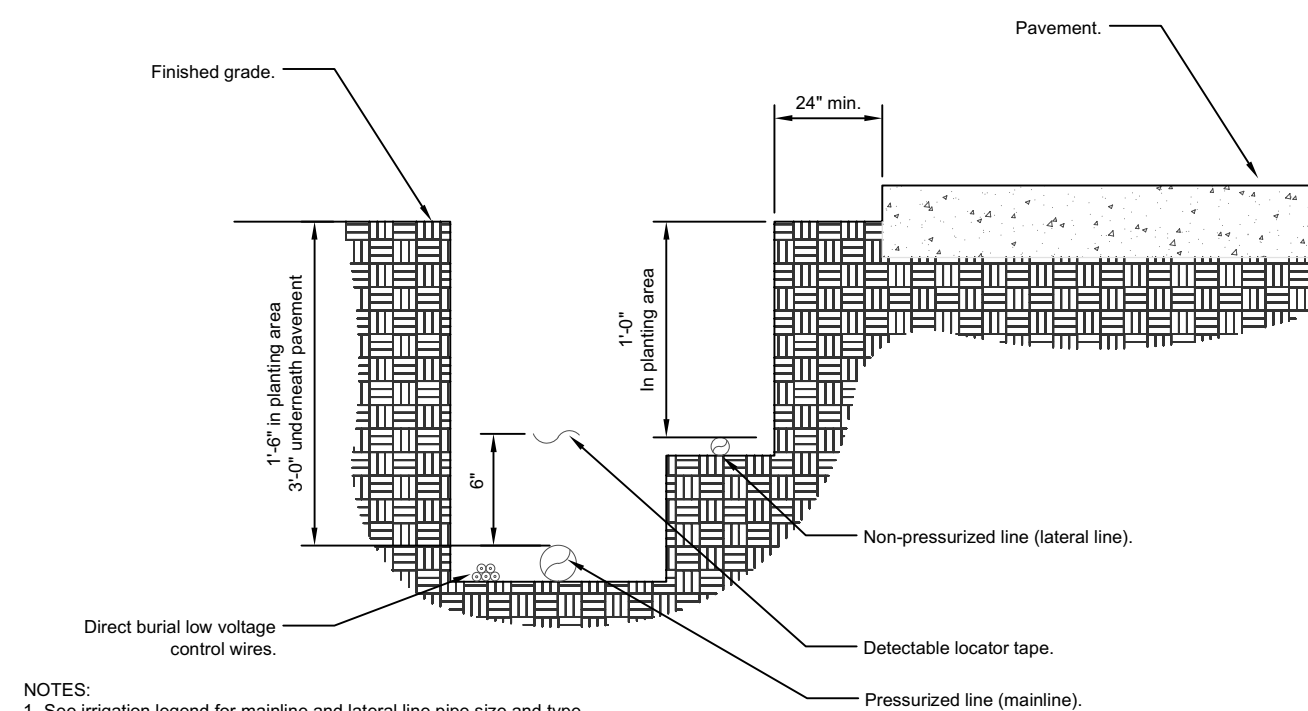


9 BRASS ISOLATION VALVE  
1 1/2" = 1'-0"

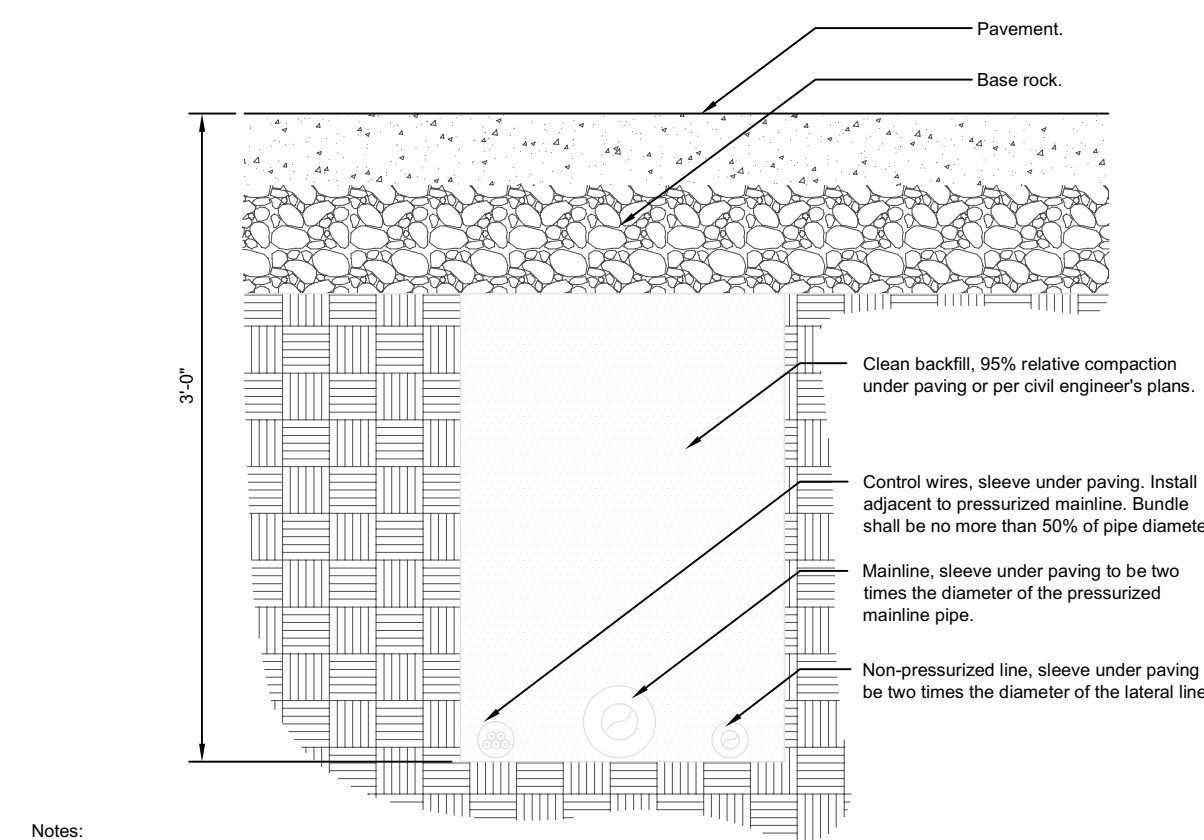
32 8406.33-01



10 ROTOR SPRAYHEAD  
1 1/2" = 1'-0"

URBAN TREE FOUNDATION © 2014  
OPEN SOURCE FREE TO USE  
FX-IR-FX-HEAD-02

11 IRRIGATION TRENCHING  
1 1/2" = 1'-0"

URBAN TREE FOUNDATION © 2014  
OPEN SOURCE FREE TO USE  
FX-IR-FX-AUXEQ-08

12 PIPE BENEATH PAVEMENT  
1 1/2" = 1'-0"

URBAN TREE FOUNDATION © 2014  
OPEN SOURCE FREE TO USE  
FX-IR-FX-AUXEQ-05

FOLIAGE  
EXPRESSIONS  
8801 SW 192nd Terrace,  
Cutler Bay, FL 33157



Digitally signed by  
James B. Euell  
Date: 2023.10.30  
15:18:55 -04'00'

PROPOSED 12 HOUSES

NW 10TH STREET  
POMPANO BEACH, FL 33060

| DISTRIBUTION: | DATE: |
|---------------|-------|
|               |       |
|               |       |
|               |       |
|               |       |
|               |       |
|               |       |
|               |       |

DRAWING NAME:  
IRRIGATION  
DETAILS